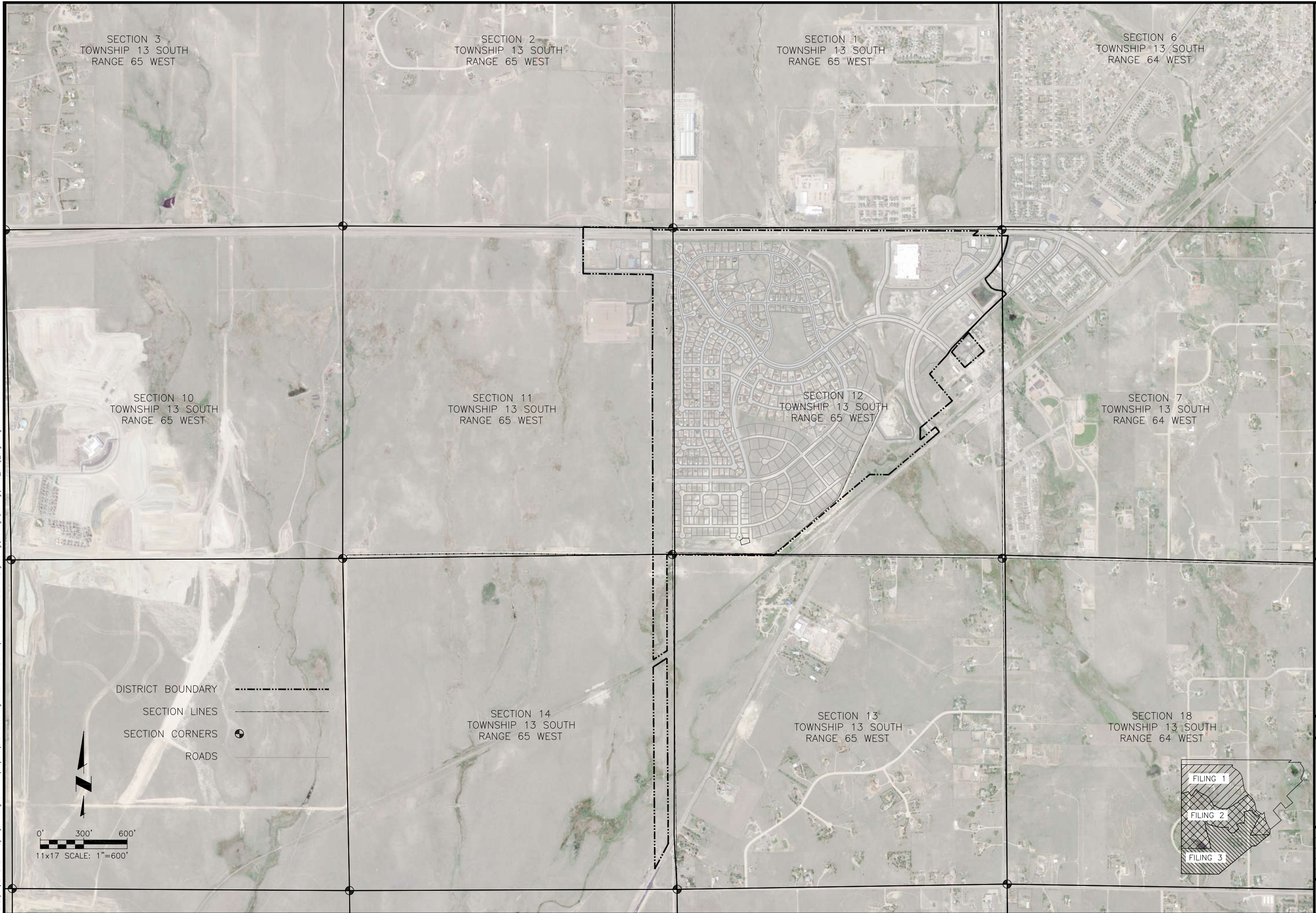


N:\Projects\310 Falcon Highlands Metro District\310.01 General District Engineering\Drawings\Working\FHMD\_Bdry\_Layout.dwg



SECTION 3  
TOWNSHIP 13 SOUTH  
RANGE 65 WEST

SECTION 2  
TOWNSHIP 13 SOUTH  
RANGE 65 WEST

SECTION 1  
TOWNSHIP 13 SOUTH  
RANGE 65 WEST

SECTION 6  
TOWNSHIP 13 SOUTH  
RANGE 64 WEST

SECTION 10  
TOWNSHIP 13 SOUTH  
RANGE 65 WEST

SECTION 11  
TOWNSHIP 13 SOUTH  
RANGE 65 WEST

SECTION 12  
TOWNSHIP 13 SOUTH  
RANGE 65 WEST

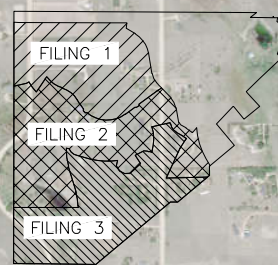
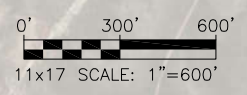
SECTION 7  
TOWNSHIP 13 SOUTH  
RANGE 64 WEST

SECTION 14  
TOWNSHIP 13 SOUTH  
RANGE 65 WEST

SECTION 13  
TOWNSHIP 13 SOUTH  
RANGE 65 WEST

SECTION 18  
TOWNSHIP 13 SOUTH  
RANGE 64 WEST

- DISTRICT BOUNDARY
- SECTION LINES
- SECTION CORNERS
- ROADS



**JDS-HYDRO** CONSULTANTS, INC.  
5540 TECH CENTER DR, SUITE 100  
COLORADO SPRINGS, COLORADO 80919  
(719) 227-0072

DISCLAIMER: THE CONTRACTOR SHALL VERIFY ALL DIMENSIONS. ANY ERRORS OR OMISSIONS SHALL BE REPORTED TO JDS-HYDRO CONSULTANTS, INC. JDS-HYDRO ASSUMES NO LIABILITY FOR UNAUTHORIZED CHANGES AND/OR REVISIONS MADE TO PLANS.

FALCON HIGHLANDS METROPOLITAN DISTRICT

FALCON HIGHLANDS SERVICE AREA

REVISIONS			
NO.	DESCRIPTION	BY	DATE
1			
2			
3			
4			
5			
6			
7			

Project No.: 310.01  
Date: 01/24/22  
Design: RMM  
Drawn: SKG  
Check: RMM